



MATTO IN UNA MOSSA

Mossa al Bianco: come riesce a dare scacco matto in **una** mossa?

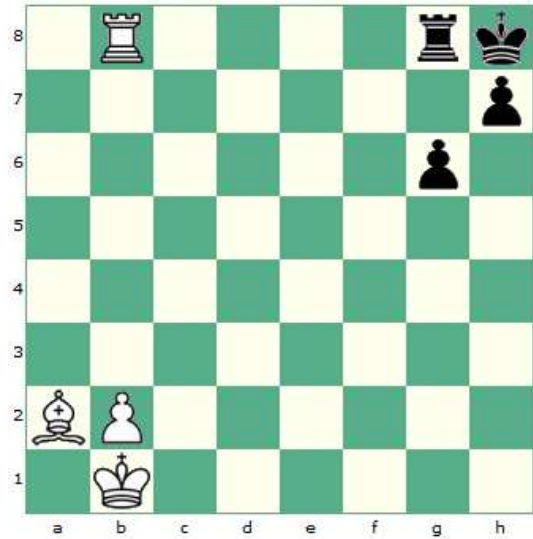
Solo dopo aver pensato almeno 5 minuti puoi guardare le soluzioni.

<p style="text-align: center;">1</p> <p>Chessboard 1: White king on e8, black king on e4, white knights on b3 and d3, white king on g2.</p>	<p style="text-align: center;">2</p> <p>Chessboard 2: White king on d5, black king on f7, white rook on g8, white queen on h3.</p>
<p style="text-align: center;">3</p> <p>Chessboard 3: White knight on f3, black king on c1, black rook on c2, white king on e1, black rook on a1, white pawns on g2 and h2.</p>	<p style="text-align: center;">4</p> <p>Chessboard 4: White king on b2, black king on e8, white pawn on d6, black pawns on e7 and f7, white queen on f3, black king on e1.</p>

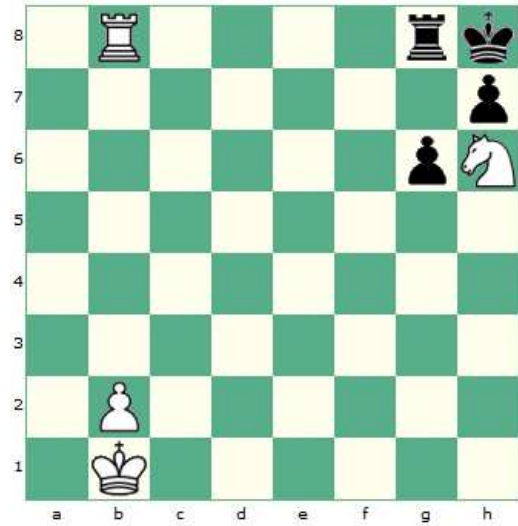
5



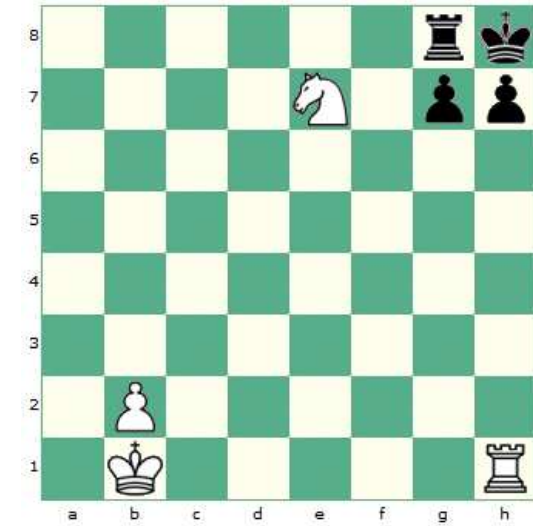
6



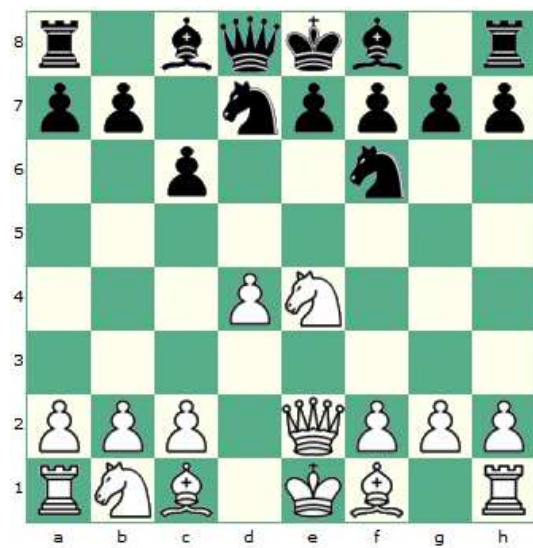
7



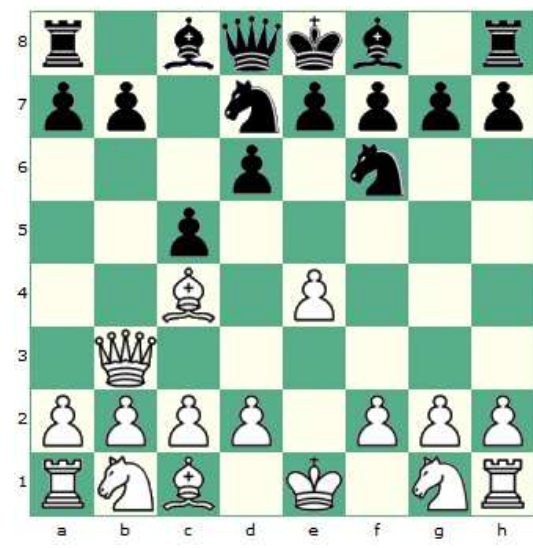
8

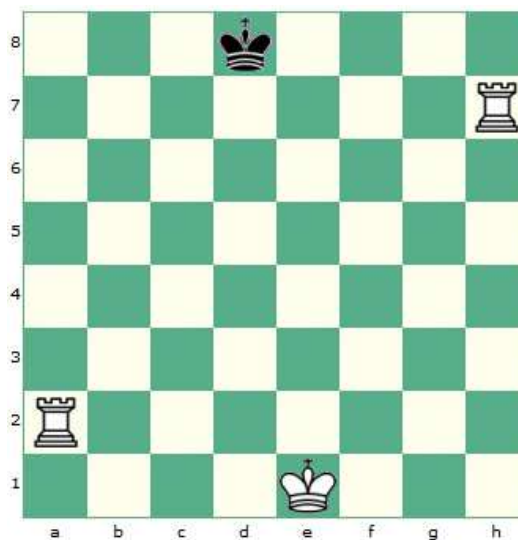
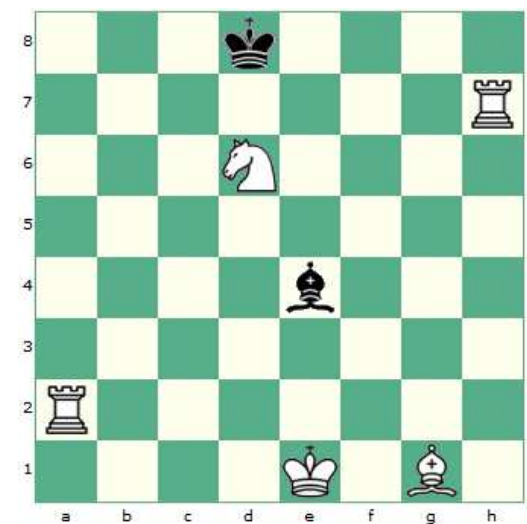
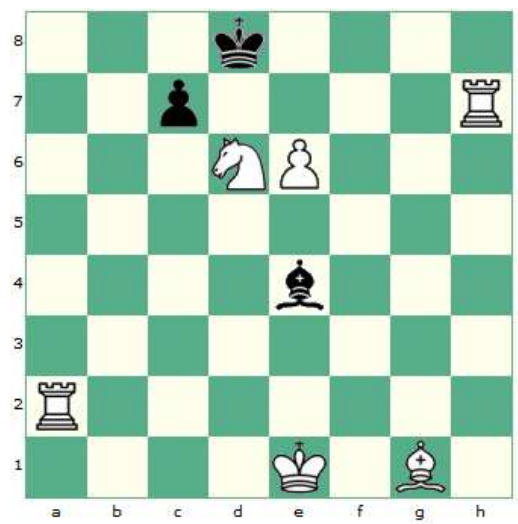
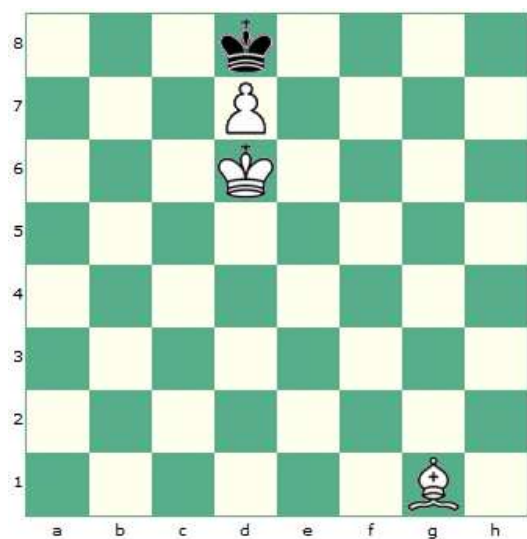
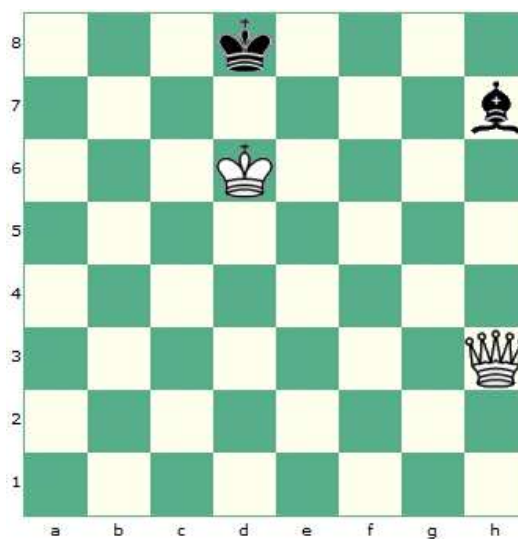


9

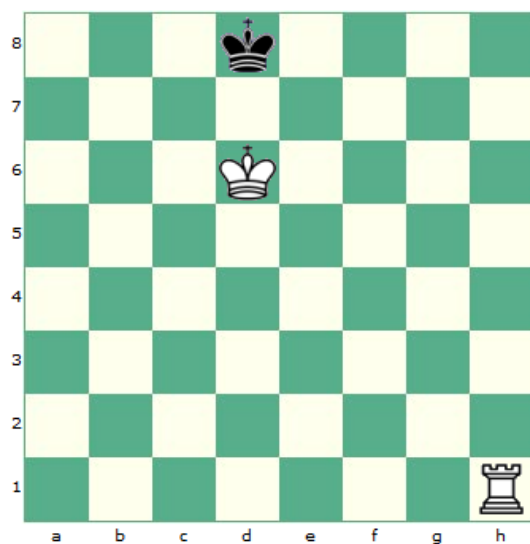


10

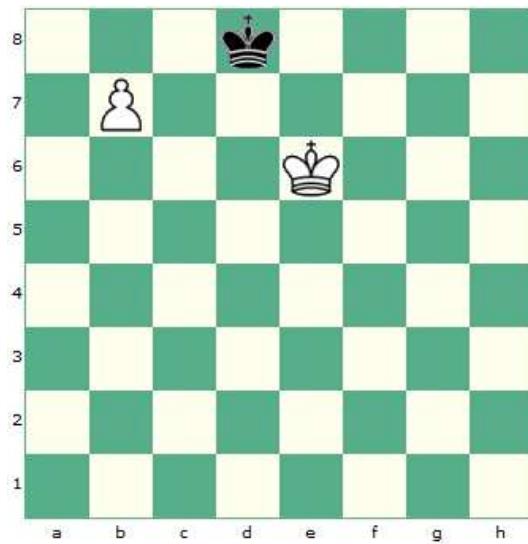


11**12****13****14****15****16**

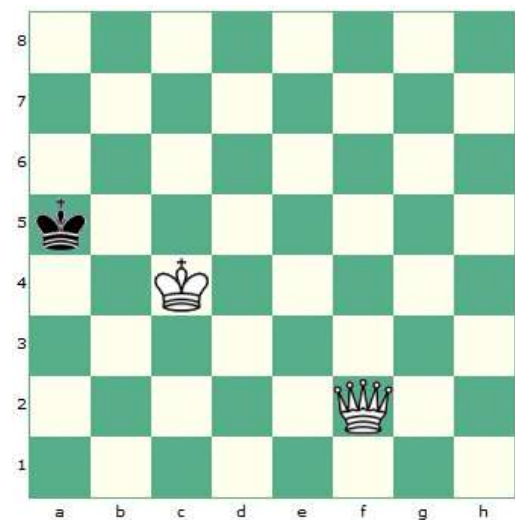
17



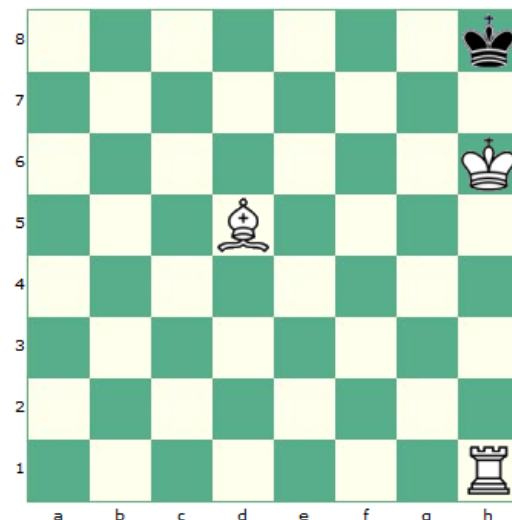
18



19



20



SOLUZIONI

1	Df3#	11	Axf7#
2	De6#	12	Ta8#
3	0-0#	13	Ab6#
4	Dc6#	14	Td7#
5	Dxf7#	15	Ab6#
6	Txg8#	16	Dd7#
7	Txg8#	17	Th8#
8	Cg6#	18	b8=D#
9	Cd6#	19	Da7#
10	Axf7#	20	Rg6#